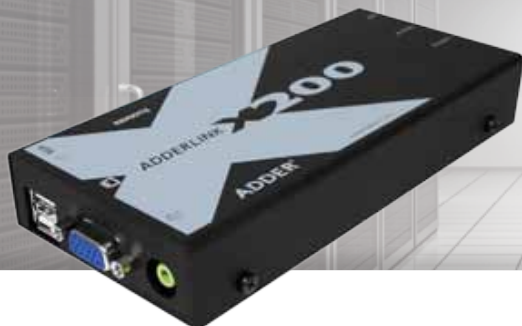




300m Extension



High density, small form factor,
USB, VGA & Audio extender

ADDERLink X200

USB keyboard, video and mouse extender with 44.1kHz digital stereo audio support and switching for two remote devices



PRODUCT IN BRIEF

AdderLink X200s have been designed for use in applications where up to two computer systems can have their keyboard, video, audio and mouse control extended up to 300 m (1000 ft.) over CAT5 or higher UTP cable.

The AdderLink X200 provides absolute real time keyboard and mouse performance along with hi-definition, hi-resolution video over a VGA interface. The AdderLink X200 receiver can be connected to the AdderView CATx range of KVM switches as well as to individual computers using Adder's range of computer access modules.

FEATURES

Video performance

Industry leading resolutions of:
1920 x 1200 to 50 m (165 ft.)
1600 x 1200 to 200 m (650 ft.)
1280 x 1024 to 300 m (1000 ft.)

Video compensation

The AdderLink X200 applies 128 steps of signal compensation enabling fine picture adjustments

Brightness control

The AdderLink X200 offers its own brightness correction to ensure images are crisp, clear and bright

Integrated De-Skew

The AdderLink X200 AS/R model has integrated skew correction with a 300MHz bandwidth (1/4 of a pixel movement at 1600 x 1200 resolution). This removes the video skew issues that can be caused by longer CATx cables

Two port integrated KVM switch

Each receiver is fitted with two ports to enable connection to a local and remote computer, or two remote computers. The user can quickly select between these ports using keyboard hotkeys or mouse control. Individual video brightness,

compensation and skew settings can be applied to each connection.

Flexible system configuration

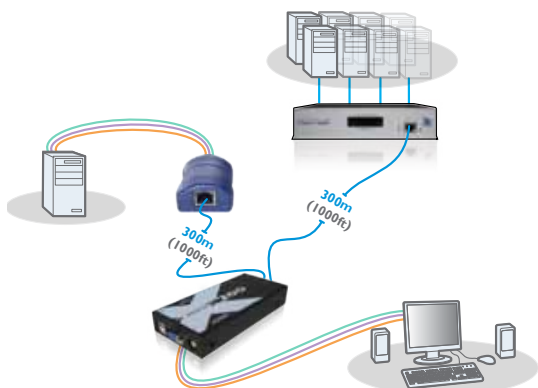
Each receiver may be connected to one or two USB, PS/2 or Sun style computer access modules. Furthermore, the X200 receiver unit may be used as the remote user station for any Adder CATx KVM switch

Emulated DDC

Unless an extender actively supports DDC some well-known high performance video cards cannot be used at high resolutions. The AdderLink X200 fully supports DDC

Digital audio

44.1 kHz digital stereo audio delivers high fidelity audio for speakers



ADDERLink X200

USB keyboard, video and mouse extender with 44.1 kHz digital stereo audio support and switching for two remote devices

ABOUT ADDER

Adder is a leading developer and thought leader in connectivity solutions. Adder's advanced range of KVM switches, extenders and IP solutions enable the control of local, remote and global IT systems across the enterprise. The company distributes its products in more than 60 countries through a network of distributors, resellers and OEMs. Adder has offices in the United States, United Kingdom, Germany, the Netherlands, Sweden, China and Singapore.

TECHNICAL SPECIFICATIONS

Video Resolution

- 1920 x 1200 at distances up to 50 m/165 ft.
- 1600 x 1200 at distances up to 200 m/650 ft.
- 1280 x 1024 at distances up to 300 m/1000 ft.

Extension Distance

Up to 300 m/1000 ft. using CATx cable (x=5,6)

Devices Supported

Supports computers with USB style keyboard and mice, flat-screen and CRT style monitors with standard HDD-15 video connectors and optional audio through 3.5 mm audio jack.

O/S Compatibility

All known software and operating systems including Windows (all), DOS, Linux, Unix, BSD, Sun OS, Solaris, Mac OS, NetWare etc.

Connectors (USB CAM)

- Video: HDD-15
- Optional audio: 3.5 mm jack
- Keyboard, Mouse: USB type A
- CATx: RJ45 connector

Connectors (X200 remote unit)

- Video: HDD-15
- Optional audio: 3.5 mm jack
- Keyboard, Mouse: USB Type A
- CATx: 2 x RJ45 connector
- Power: 2.5 mm DC jack

Physical (USB CAM)

Combination of plastic enclosure and cables.
Enclosure: 64 mm/2.5 in. x 45 mm/1.8 in. x 25 mm/1 in. Cables: 340 mm/13.4 in. long

Physical (X200 remote unit)

All metal case, 172 mm/6.8 in. x 26 mm/1 in. x 75 mm/3 in. 430 g/1 lb.

ORDERING INFORMATION

USB Receiver & CATX-USB access module: **X200-USB/P-XX**
USB Receiver: **X200/R-XX**
USB Receiver + audio & CATX-USB access module: **X200A-USB/P-XX**
USB Receiver + audio: **X200A/R-XX**
USB Receiver + audio, skew & CATX audio access module: **X200AS-USB/P-XX**
USB Receiver + audio & skew: **X200AS/R-XX**

XX	= Mains Lead Country Code:
UK	= United Kingdom
US	= United States
EURO	= Europe
AUS	= Australia

ADDITIONAL ACCESSORIES

CAM: Computer Access Module Order Codes

PS/2 CAMs:
CATX-PS2 (PS/2 only),
CATX-PS2-A (PS/2 plus audio)

USB CAMs:
CATX-USB (USB only),
CATX-USB-A (USB plus audio)
CATX-PS2 (PS2 only)
CATX-PS2A (PS2 with Audio)

Sun CAM:
CATX-SUNA (Sun plus audio)
Serial flash upgrade cable (4-way jack connector to 9-way D-type male serial connector): **CAB-9DF-RJ9-2M**



Example CAM: CATX-USB-A

RELATED PRODUCTS

Adder offer a vast range of products to suit your needs. Other products you may be interested in include:

ADDERLink X100
X100/R; X100A/R;
X100A-PS2/P; X100AS/R;
X100A-USB/P; X100-PS2/P; X100-USB/P



ADDERLink X50
X50



ADDERLink INFINITY
ALIF1000



ADDERLink X DVI
X-DVI



ADDERLink X USB
X-USB-A



Power Supply

100 - 240VAC 50/60Hz (X200 remote unit only)

Approvals
CE, FCC